

Welcome to our Harvest Newsletter

A few words from the General Manager....

The first day of September is known in meteorological terms as the beginning of Autumn. August and September are, I believe, the months most associated with the harvest. So, I would like to commend to you our Harvest 2019 Newsletter.

It is through our newsletter that we have an opportunity to share our news with you of what has been happening here at CARE: what we have been doing within our services to help and support vulnerable local people, the things we have achieved, like the granting of a further three years of funding from the National Lottery Community Fund (see the piece on page 2); the people that we are sadly saying farewell to and on the other hand the people that we have welcomed into the charity in recent months.

I particularly want to thank our retiring Director, Stephen Franklin, who has given twenty-seven years to CARE as a Trustee/Director. Stephen has given his time on a voluntary basis since the charity was formed. (See the message on page 4)

In July we changed the way that we operate the Daily Bread Food Larder, by no longer having public access to emergency food parcels here at our offices in Hainton Avenue. Instead, we have now set-up new partnerships with other food providers in the area. We are also very pleased that we teamed up with a group of National Citizenship Service students during the school holidays to get food out into the community. (See the article on page 3).

Autumn is a time of thanksgiving for the harvest and the blessings it brings to us. It is also a time of sharing what might be our abundance with those who have not.

CARE will never have enough resources to satisfy the needs of the needy in our area; we will also be grateful for your help. You can help us by **VOLUNTEERING** your time to us; by **DONATING** goods and money to us; by **SHOPPING** with us in our charity shop.

Thank you and enjoy... Stephen Durkin

"We are dedicated to relieving poverty, hardship & distress"



LOCAL CHARITY WHO HOUSE THE HOMELESS AND SUPPORT VULNERABLE PEOPLE THANK THE PLAYERS OF THE NATIONAL LOTTERY



We are delighted to announce that earlier in the Summer we found out that we had been successful in securing a National Lottery Community Fund (NLCF) grant for three years, totalling £415,000. This will allow us to carry on offering our Housing and Community Support services, here in North East Lincolnshire, to the many local people that we assist with obtaining housing for them and supporting them with what can be quite complex, associated needs.

Stephen Durkin, CARE's General Manager, says: ***"When people approach our services, very often they are at a crisis point in their lives. This grant means that we will be able to continue to help prevent people's homelessness, improve their health, wellbeing and finances, their life-skills and just as importantly, their confidence."***

This and other NLCF grants are made possible through the players of the National Lottery, the people who buy their tickets each week. By doing so they are not only purchasing the chance of a dream, what could be a life-changing win for them, but they are helping numerous good causes locally and up and down the country, like CARE, to potentially have a life-changing effect on vulnerable, needy and often marginalised sections of the community.

Kim Ward, who is the Housing and Community Support Manager at CARE, told us: ***"many of our clients report to us as they leave our service that what we have done for them has been life-changing for them. So, we just want to say thank you to all the players of the National Lottery."***

CARE offer a housing service that works mainly with private-sector landlords who make their properties available to the people we help; there is no advance rent or deposit required and in return CARE offer the landlord a limited damages guarantee, and will then offer one-to-one floating support to the tenant to help them maintain the tenancy and sustain the person's independent living. The Community Support also includes an Open-House drop-in facility through which people have access to help Monday to Friday.

Louise Law, one of our Community Support Workers, who like everyone at CARE is over the moon with the news of our successful bid said: ***"securing funding for a further three years has been a God-send-for struggling families in our area. As public funds are cut back across the board, our service is increasingly important to the people we support."***

"We are dedicated to relieving poverty, hardship & distress"



YOUNG PEOPLE HELPING WITH FOOD FOR FAMILIES DURING THE SCHOOL HOLIDAYS

A group of fourteen 15 to 17-year-old students, along with three mentors, part of the NCS - National Citizen Service, have recently been based at St Mary's on the Sea presbytery for the past two weeks. As part of their social action programme they partnered with CARE's Food Larder project. They raised money by putting on Coffee and bingo morning's in the parish hall and spent time on Cleethorpes seafront offering face painting. They also made up several food bags, which involved thinking about the food items that would allow a low income family to put together some basic meals.



The summer holiday's put pressure on families, some of whom may already have to rely on emergency food providers in the area. These food bags were delivered to Families First East Marsh and West Marsh centres on Friday, 9th August 2019. On receiving the food bags at the East Marsh centre in Victor Street, Grimsby, Jenny King, Locality 2 Lead was delighted, she thanked the NCS group and told them, *"I know just the families that we will give out the bags to today. This will be a big help to them."* Similar thanks were given by Emma Kennedy, one of the three managers in Locality 4, upon receipt of some food bags at the West Marsh centre in Macaulay Street, Grimsby.



CARE's General Manager, Stephen Durkin said, "It is so encouraging when you see what a difference a group of local teenagers can make when they pool their resources and put their minds to helping others, less fortunate than themselves, in the community."



"We are dedicated to relieving poverty, hardship & distress"

Farewell

We are saying farewell to Stephen Franklin as he retires from trusteeship of CARE. Stephen has served well as a Trustee since the CARE charity was founded in 1992. 27 years is a long haul and Stephen has always been supportive, encouraging and wise as he shared with others in guiding the affairs of the Charity. CARE would not be where it is today without the expertise of people like Stephen who served unstintingly in a voluntary capacity. Thank you Stephen for all your endeavours.



Many thanks



Immingham Daily Bread Food Larder offers a valuable service to the residents of Immingham and surrounding villages. This service is run from our Immingham Access Point in Immingham Civic Hub 12-3:30 Monday to Friday. It runs alongside our Support 'Open House' sessions offering advice and guidance to people who need it. We have been very blessed to have continued strong community support by receiving regular food donations from individual residents, local shops, churches, businesses and organisations. This enables us to continue to meet the needs of those most vulnerable in our area who are facing financial hardship. Immingham Access Point offers Volunteer opportunities for those wanting to get involved in a hands on way. We are very excited to be holding our 5th Toys for Joy scheme at Christmas and we are very excited for the upcoming Harvest Festival session and the opportunity to raise awareness of the service we provide with the schools and the community. Please contact Elaine on;
t: 07419374197
e: imminghamaccesspoint@carenelincs.co.uk

Pictured above showing our Immingham Access point Co-ordinator Elaine receiving generous donations from the Immingham Community

"We are dedicated to relieving poverty, hardship & distress"

Since the beginning of January 2019, we are excited to report that we have taken on 12 new properties, with a further 4 new properties heading our way soon. We have created 19 new tenancies and newly housed a total of 32 adults and children, who are a mixture of single people and families. Not bad going for a little charity on Grimsby's East Marsh! Housing people who don't have the means for a deposit and rent in advance changes lives. One of our newest CARE clients spoke to us about being housed and supported through our charity, they said ***"It's made a very, very big difference to me and son. We are a lot happier. My son knows I am happy and that makes him happy too.***



I wouldn't have been able to do this on my own and I would have been stuck in the same position I was without CARE. My depression has improved a lot now". The landlords also tell us that they get a lot of satisfaction from housing vulnerable people alongside our charity. Recently a very grateful client we housed brought in a thank you card and chocolates for Anita our Tenancy Support Officer, who felt it was lovely to be appreciated.



WORKING WONDERS TOGETHER ON THE WEST MARSH



Darren and Nathan, a father and son, were housed through CARE with one of our long-time landlords, Tonya. The scheme, in partnership with local landlords, provides no-deposit, low-cost housing in the North East Lincolnshire area for people without the means to access private-rented accommodation.

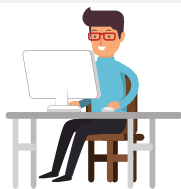
Tenants are also provided with a CARE Community Support Worker for the first year in the property. When Darren moved in, he expressed that now he had a place with some outside space, he looked forward to having a barbeque out the back.

Darren and Nathan, have worked tirelessly alongside their new landlord, Tonya, to transform the area behind the property as it was filled with refuse and junk from fly-tippers. They also weeded the whole area and Tonya provided them with the tools and weed-killer they needed for the job and to keep on top of it into the future. A gate and chain were put in place to discourage further dumping. Tonya said the guys had been absolutely brilliant. She is delighted to have tenants who care about the property as much as she does. Darren and Nathan look forward to having a barbeque in their newly cleared back yard, weather-permitting!

Community Space Progress



We are really excited about Grimsby Institute helping CARE to develop our Community Space within our Grimsby Access Point in line with what our community have told us they need and want. When we carried out stakeholder wide surveys last Autumn, our clients told us that they would like a confidential space within CARE, where they could be supported to do things that they needed to do online, but that they struggled to do alone. Many people come to us who find literacy, numeracy and IT challenging, plus many people are digitally excluded by virtue of poverty. The things they need to do can range from applying for benefits, housing or charitable help online, to researching things with their Community Support Worker which will help them know what to do next. Grimsby Institute heard about what our clients need us to enable them to do and have come to the rescue to provide the means to do this!! On Friday 6th September Harshad, Adrian and Dave from Grimsby Institute came to visit us and look at developing our community space. They are helping with making the room both practical with computers and desks, as well as with the soft furnishings needed to make the room versatile, to make a space where they can meet for groups they decide they would like. It will also give our retired Franklin College GCSE Maths and English tutor Colin somewhere to hold his lessons for our clients instead of them having to 'hot desk'! Harshad's team are also going to provide IT training to our staff and give IT support to improve the performance of our existing equipment. We could not be more pleased and grateful for the help Grimsby Institute are giving CARE to help the community we support. The visit from Harshad, Adrian and Dave was really fun and practical. They met staff, made us laugh and talked about our joint plans going forward. Here they are measuring up to see how the room is going to work out. These are the before pictures and we will show you the after in the coming months!! Our student assistant Robyn Ward also got busy decorating the room!



We say goodbye to our Customer Support Officer, Rachel, after 10 months advising, guiding and signposting our clients at the Grimsby Access Point. We wish her well in her new job at Cobalt Cat Media in Macclesfield.





**CAN YOU HELP
US TO HELP
THOSE IN
NEED?**

Every donation helps, however big or small! Please help us to make an even bigger difference to those in need across North East Lincolnshire.

OUR CHARITY ALWAYS NEEDS:
**FURNITURE (BEDS WARDROBES SETTEES TABLES &
 CHAIRS) CLOTHES BEDDING BRIC-A-BRAC
 BOOKS CD'S SHOES & HANDBAGS KITCHENWARE
 CROCKERY & CUTLERY ELECTRICAL ITEMS**

**We will collect free
 of charge call the
 CARE Shop to
 arrange 01472 232312**

**CARE Shop,
 46-47 Alexandra Road,
 Cleethorpes DN35 8LE
 e: enquiries@carenelincs.co.uk
 w: www.carenelincs.co.uk**



**We welcome Antony our
 new Retail Van Driver
 available to collect your
 donations Monday, Wed,
 Friday**



Your donated goods that we have collected will be put to very good use:

- they will either be sold in our charity shop helping to raise funds for us to help house and support homeless and vulnerable local people, or
- they will be donated free of charge to local people who are lacking basic furniture and equipment and do not have the money themselves to pay for such necessary items.



SINCE WE BEGAN OUR WORK WE HAVE:

- Housed 4,500 local people
 - Supported 10,000 local people
 - Donated onwards £350,000* worth of second-hand furniture and equipment (*at charity shop prices)
- We can only do this through your generosity!**



"We are dedicated to relieving poverty, hardship & distress"



TOYS FOR JOY 2019

CHILDREN'S TOYS!

PLEASE CONSIDER GIVING A NEW TOY TO A LESS FORTUNATE CHILD THIS CHRISTMAS THROUGH OUR TOYS FOR JOY PROJECT!

WE ARE NOW TAKING DONATIONS AT OUR:
IMMINGHAM & GRIMSBY ACCESS POINT



TOYS FOR JOY 2019

Are you able to volunteer at our Christmas project?

Each year CARE collects brand new toys to give out to children in North East Lincolnshire who are known to agencies to be the most vulnerable and likely to receive nothing at Christmas due to their families financial circumstances.

WED 11TH DECEMBER 2019 13:00 - 16:00
SETTING UP AND DISPLAYING TOYS

THUR 12TH DECEMBER 10:00 - 16:00
HELPING PARENTS AND SUPPORT WORKERS CHOOSE TOYS

HOLY TRINITY PARISH HALL, CORPUS CHRISTI CHURCH,
GRIMSBY ROAD, CLEETHORPES, DN35 7LJ

Please let Katie Jones know your availability
katie.j@carenelincs.co.uk 01472 232310



CARE NEWS



For more information on our services, contact:

CARE, Grimsby Access Point,

18 Hainton Avenue, Grimsby, North East Lincolnshire, DN32 9BB

Tel: 01472 232310

CARE Shop, 46/47 Alexandra Road, Cleethorpes, North East

Lincolnshire,

DN35 8LE

Tel: 01472 232312

Email: enquiries@carenelincs.co.uk

www.carenelincs.co.uk

Dedicated to relieving poverty, hardship and distress in North East Lincolnshire

This is provided through the following services



SHOP



FURNITURE



HOUSING



SUPPORT



FOOD



Psalm 95:2-3

2 Let us come before him with thanksgiving and extol him with music and song. 3 For the LORD is the great God, the great King above all gods.

CARE

18 Hainton Avenue, Great Grimsby, North East Lincolnshire, DN32 9BB
Tel: 01472 232310
enquiries@carenelincs.co.uk

CARE Shop

46 - 47 Alexandra Road, Cleethorpes, DN35 8LE
Tel: 01472 232312
shop@carenelincs.co.uk

www.carenelincs.co.uk

Registered Charity No. 1027978

*Touching lives with hope,
transforming lives with action*



PayPal You can now support CARE
Giving Fund through PayPal giving fund

<https://www.paypal.com/gb/fundraiser/charity/3258139>

And if you shop at amazon.co.uk
consider using smile.amazon.co.uk

amazon smile and selecting CARE as your charity.
You shop. Amazon gives.



Please visit our facebook page to keep upto date with our events and services
www.facebook.com/carenelincs

"We are dedicated to relieving poverty, hardship & distress"